

Model No. 6A and 6B Electric Operated Anchor Windlass

Up to 75 pound Anchor



Designed and manufactured to meet requirements of the yachtsman who has wanted a fast dependable anchor windlass. Motor is connected direct, but installed below deck, giving neat appearance. Brake operated by large handwheel with separate wrench for increasing leverage. Emergency hand crank operation in case of power failure. Shaft and fittings made of stainless steel. Deck pipe will handle chain and line with thimble. Windlass is complete with water tight chrome plated foot switch, solenoid and brake wrench.

Motor Voltages Available:

- ◆ ¾ hp. Ceramic field intermittent duty
12 Volt DC / Capacity 300 lbs.
- ◆ 1 hp. Ceramic field intermittent duty
32 Volt DC / Capacity 400 lbs.
- ◆ 1 hp. Ceramic field intermittent duty
115 Volts AC / Capacity 400 lbs.

Weight

- ◆ 6A-60 lbs. aluminum alloy unit
- ◆ 6B-75 lbs. bronze unit

Chain size

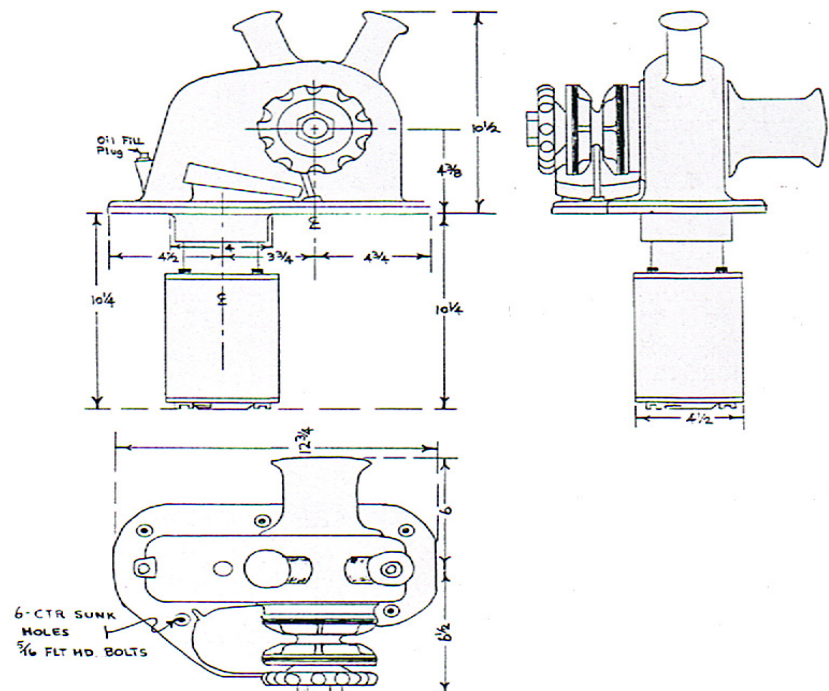
- ◆ 1/4," 5/16," 3/8," BBB, System 3, 4, 7, and System 8

Finish

- ◆ Tough white powder coat with polished bronze handwheel and aluminum or bronze rope gypsy. (*Polished bronze can be furnished chrome plated.*)

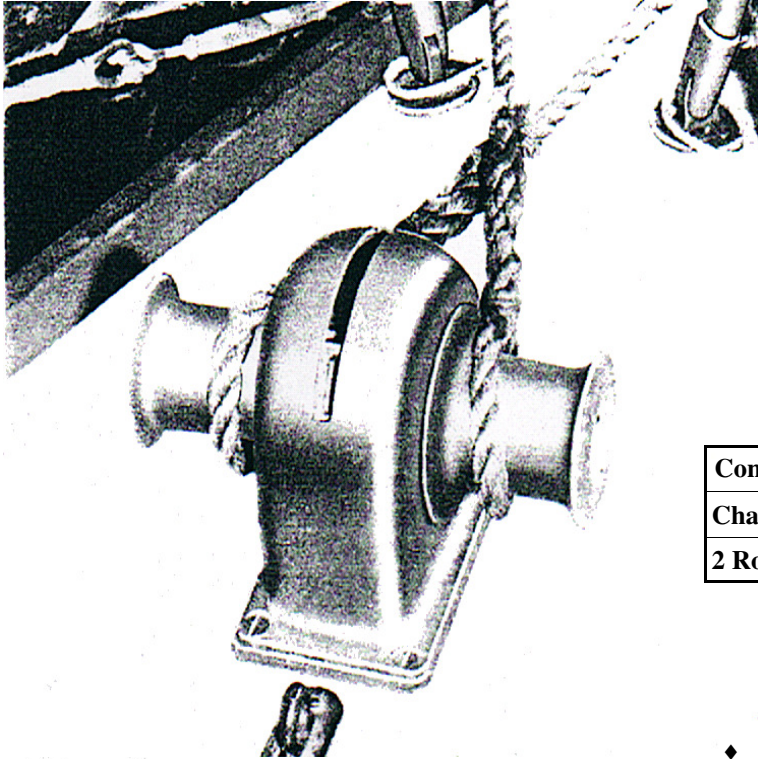
Speed

- ◆ 35 ft. per minute



Model No. 7A and 7B Hand Operated Anchor Windlass

Up to 50 pound Anchor



Available with either two rope gypsies or one rope gypsy and one chain wildcat, this windlass is especially light-weight, but very sturdy. Model No. 7A is cast of high-tensile, corrosion resistant aluminum alloy — Model No. 7B is made of cast bronze and is also available chrome plated. Shaft and fittings made of stainless steel. The removable handle is used for operating the double-action ratchet, engaging the clutch, and the smooth-acting brake for dropping anchor. Ratchet provides continuous rotation for forward and reverse strokes. Clutch-arrangement allows independent use of the rope gypsy when anchoring with chain. Deck pipe will handle chain and line with thimble. Designed for use on pleasure craft or work boats.

Weight

Configuration	Aluminum	Bronze	Chrome
Chain Wildcat	28 lbs.	45 lbs.	45 lbs.
2 Rope gypsies	22 lbs.	38 lbs.	38 lbs.

Chain Size

- ◆ 1/4," 5/16," 3/8," BBB, System 3, 4, 7, and System 8

Finish

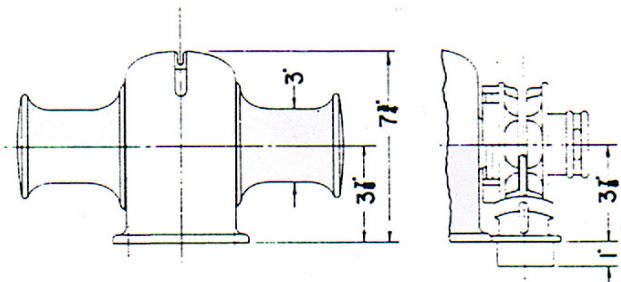
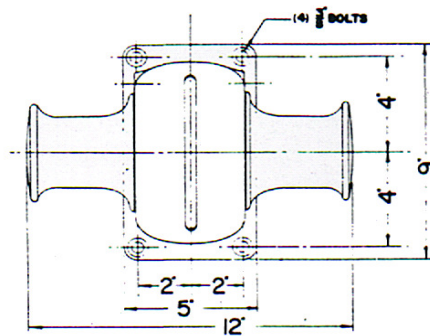
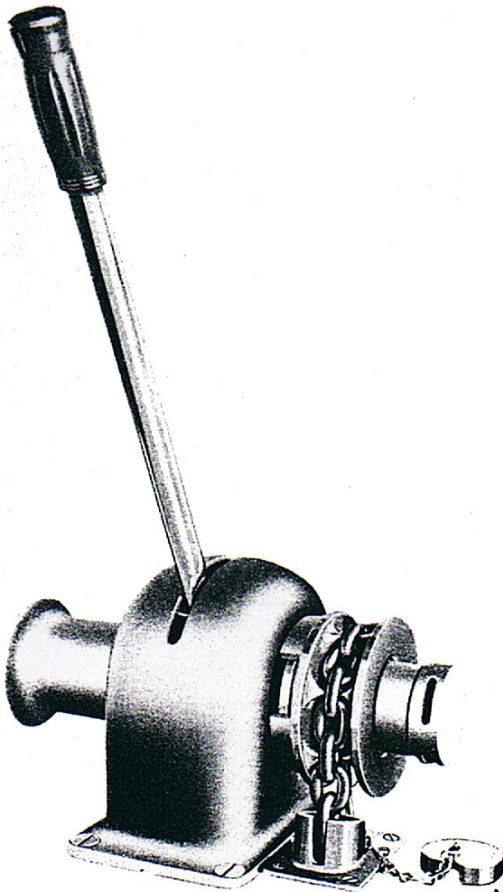
- ◆ Bronze model is available chrome plated or wire burnished. Aluminum alloy finished in a tough white powder coat.

Handle

- ◆ 18" long / removable

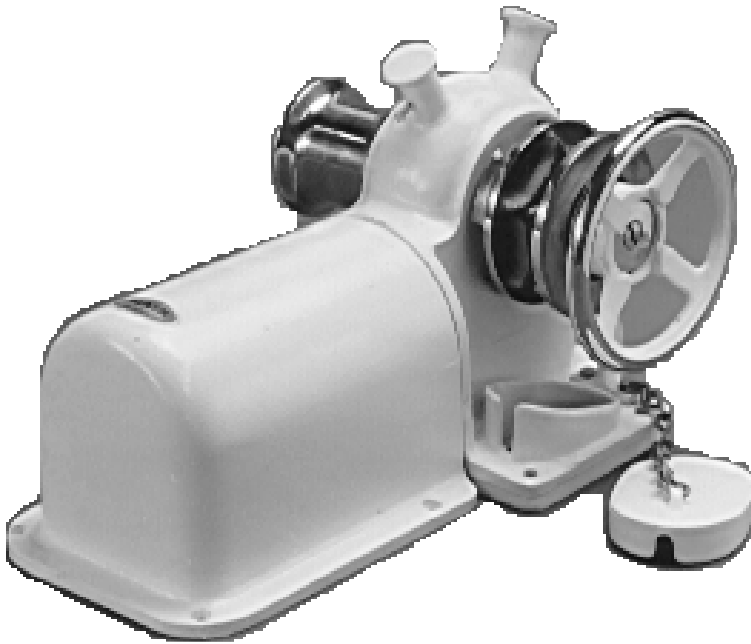
Speed

- ◆ Approximately 20 ft. per minute



Model No. 9A and 9B Electric Operated Anchor Windlass

Up to 40 pound Anchor



A small 12 volt Anchor windlass, built of the highest quality cast corrosion resistant aluminum alloy housing, or cast bronze housing. Stainless steel shaft and fittings available with either two rope gypsies or one rope gypsy and one chain wildcat. The chain wildcat is easily controlled by turning the bronze handwheel to engage or release. Brake arrangement allows independent use of the rope gypsy and chain wildcat. Complete unit mounts on deck and includes solenoid; water tight chrome plated foot switch and emergency handle. Deck pipe will handle chain and line with thimble.

Designed for use on boats 24' to 35.'

Motor Voltage Available:

- ◆ ¾ hp. Ceramic field intermittent duty
12 Volt DC / Capacity 300 lbs.

Weight

- ◆ 9A-50 lbs. aluminum alloy unit
- ◆ 9B-70 lbs. bronze unit

Chain size

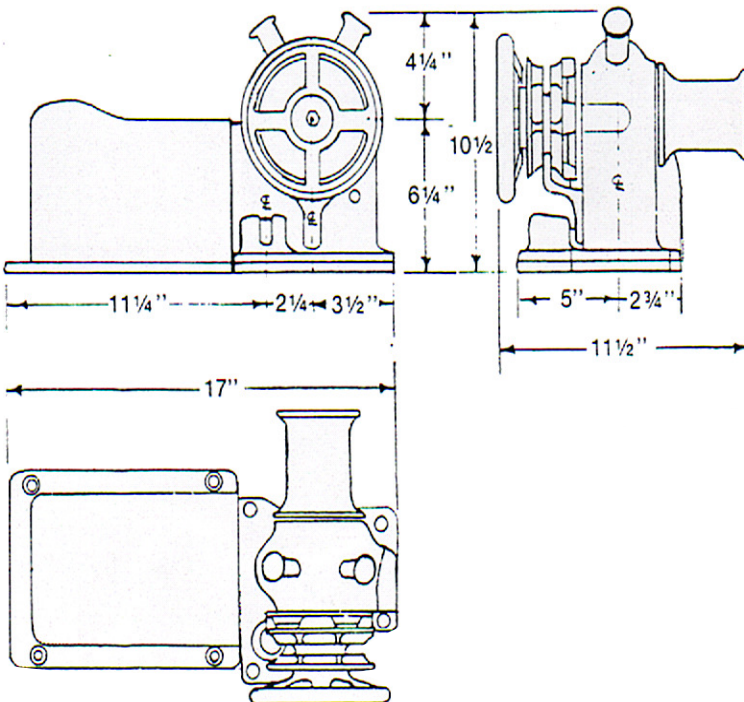
- ◆ 1/4," 5/16," 3/8," BBB, System 3, 4, 7, and System 8

Finish

- ◆ Tough white powder coat. Aluminum model has aluminum rope gypsy with polished bronze handwheel. Bronze model has polished bronze rope gypsy and polished bronze handwheel. (*Polished bronze can be furnished chrome plated.*)

Speed

- ◆ 40 ft. per minute



Model No. 9A and 9B available in the following additional configuration:



Model No. 11A and 11B Electric Operated Anchor Windlass



A small 12 volt anchor windlass built of cast corrosion resistant aluminum alloy housing or cast bronze housing. Stainless steel shaft and fittings. Available with either two rope gypsies or one chain wildcat and rope gypsy. The chain wildcat easily controlled by turning the bronze handwheel to engage or release brake. This arrangement allows independent use of the rope gypsy and wildcat. The 12 volt motor mounts below deck and comes completely assembled ready for mounting. Unit comes complete with solenoid and chrome plated water tight foot switch and emergency handle. Deck pipe will handle chain and line with thimble.

Designed for use on boats 24' to 35'.

Motor Voltage Available:

- ◆ ¾ hp. Ceramic field intermittent duty
12 Volt DC / Capacity 300 lbs.

Weight

- ◆ 9A-50 lbs. aluminum alloy unit
- ◆ 9B-70 lbs. bronze unit.

Chain size

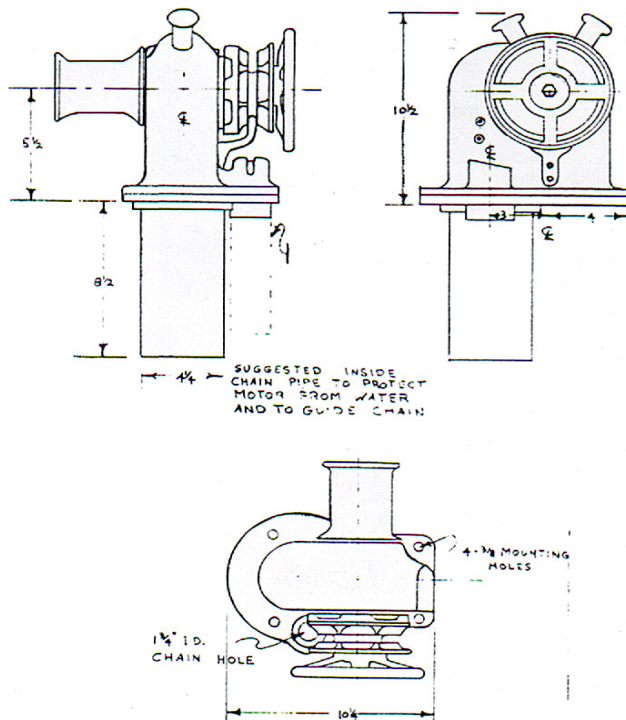
- ◆ 1/4" , 5/16" , 3/8" , BBB, System 3, 4, 7, and System 8

Finish

- ◆ Tough white powder coat. Aluminum model has aluminum rope gypsy with polished bronze handwheel. Bronze model has polished bronze rope gypsy and polished bronze handwheel. (Polished bronze can be furnished chrome plated.)

Speed

- ◆ 40 ft. per minute



Model No. 11A and 11B
available in the following additional configuration:



Model No. 12G Electric Operated Vertical Capstan Anchor Windlass

Up to 40 pound Anchor

A small compact vertical capstan anchor windlass for yachts of 24' to 35'. Designed for the yachtsman who wants as little forward deck space used for anchoring equipment as possible. The unit consists of only a deck plate and rope gypsy above deck and can be mounted with power and gearbox in three positions below deck. Deck thickness may be adjusted from 3" to 5" by adjusting the coupler. Shaft made of stainless steel. Included with the unit are a chrome plated water tight foot switch, solenoid, and three stainless steel mounting bolts. Deck pipe and guide available that will handle chain and line with thimble.

Motor Voltage Available:

- ◆ ¾ hp. Ceramic field intermittent duty
12 Volt DC / Capacity 300 lbs.

Weight

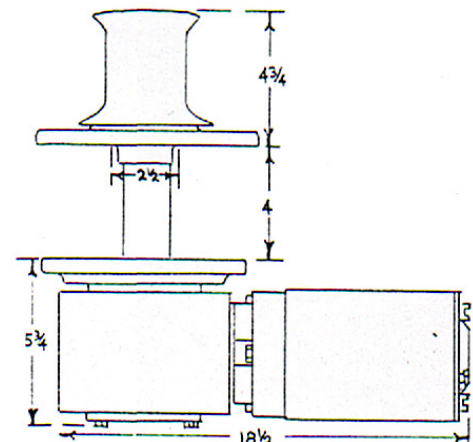
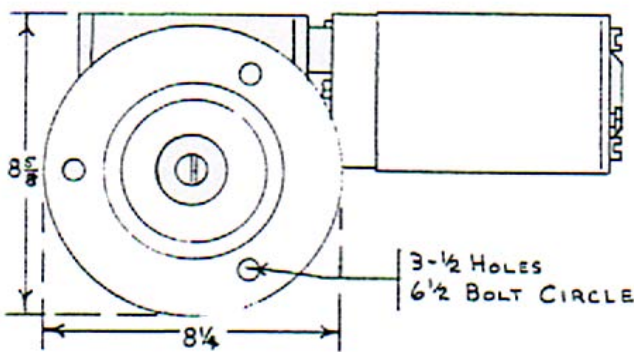
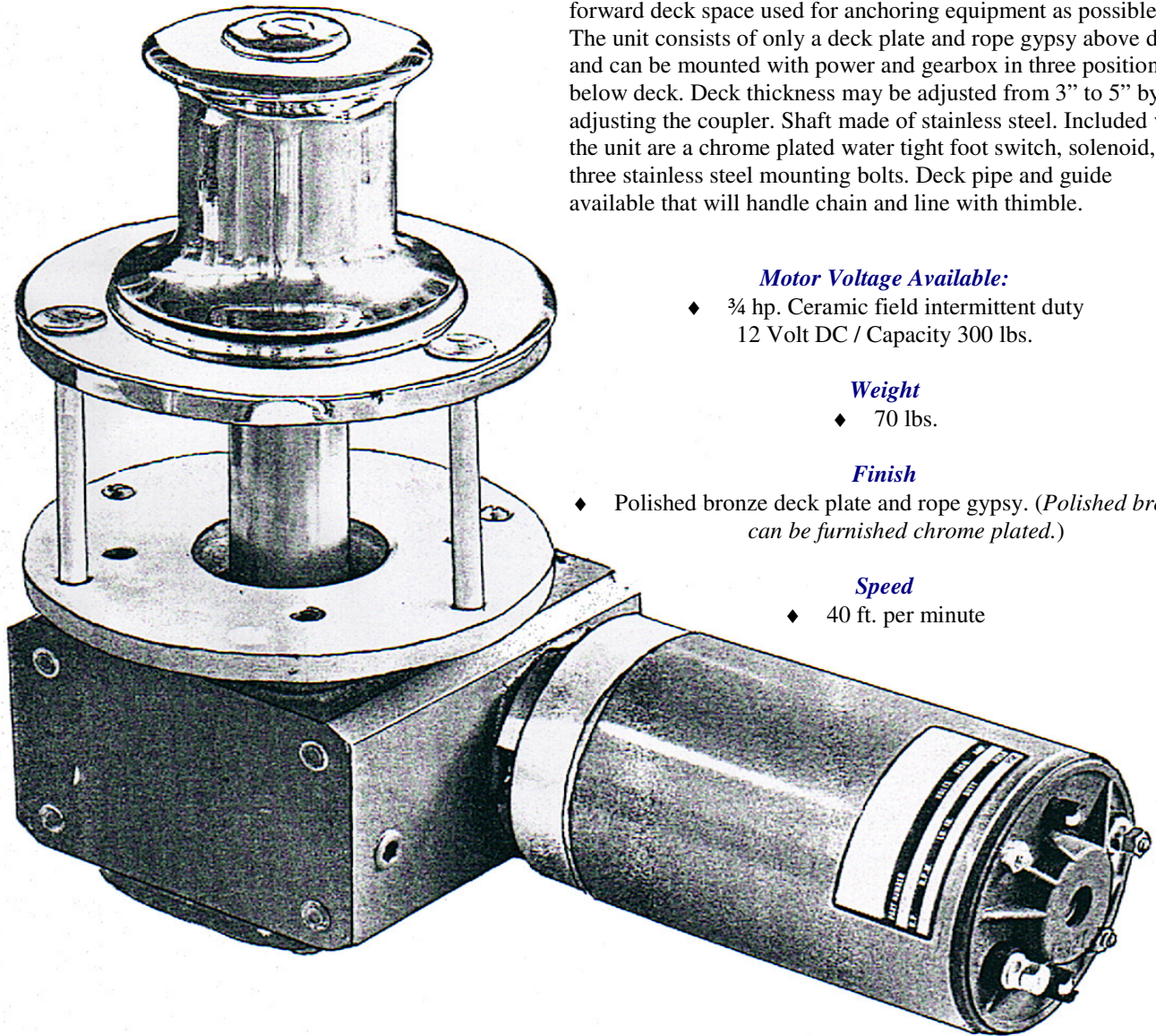
- ◆ 70 lbs.

Finish

- ◆ Polished bronze deck plate and rope gypsy. (*Polished bronze can be furnished chrome plated.*)

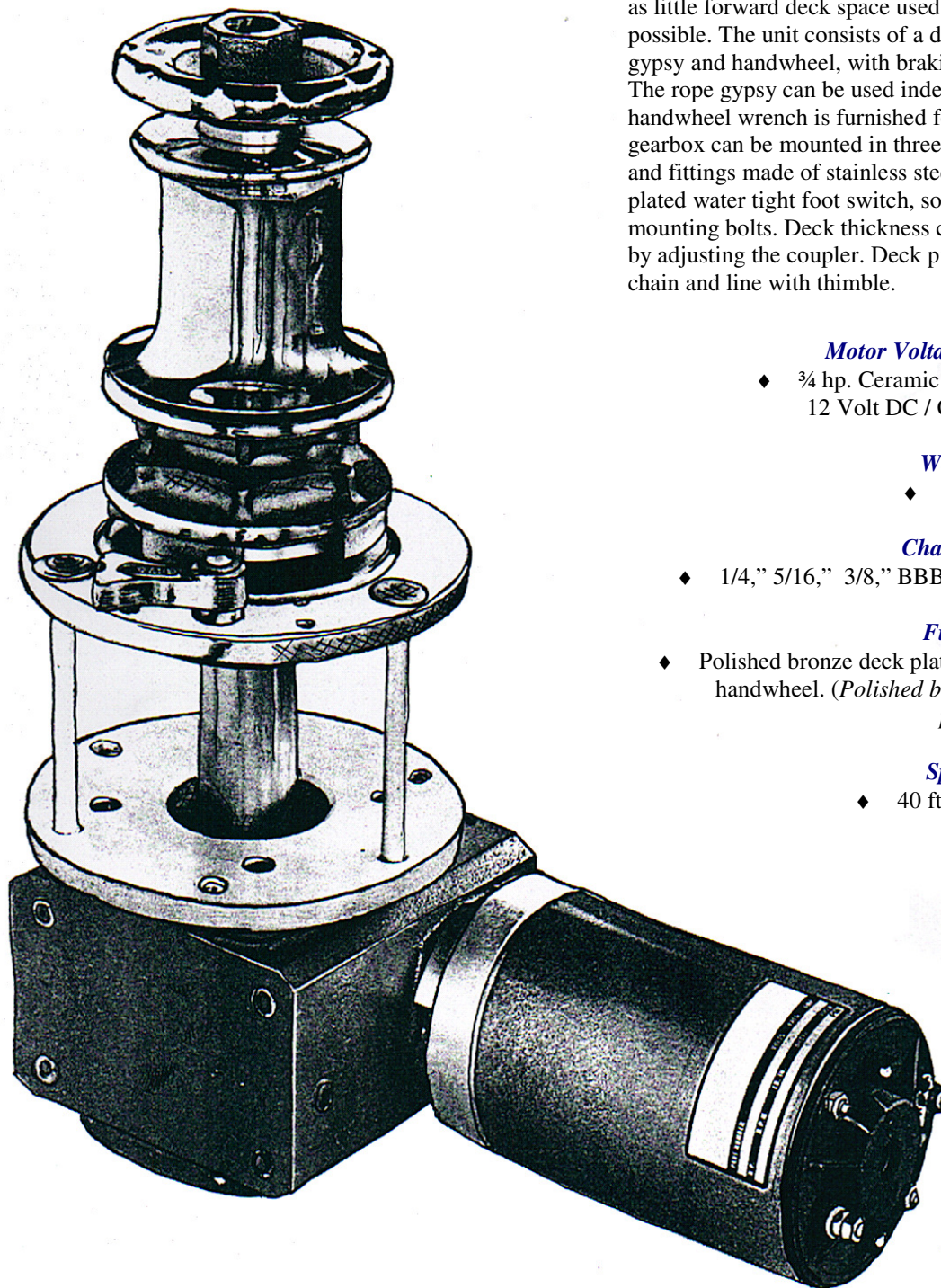
Speed

- ◆ 40 ft. per minute



Model No. 12GW Electric Operated Vertical Anchor Windlass

Up to 40 pound Anchor



A small compact vertical anchor windlass for boats 24' to 35' with limited forward deck space, or where the yachtsman wants as little forward deck space used for anchoring equipment as possible. The unit consists of a deck plate, chain wildcat, rope gypsy and handwheel, with braking through a disc type brake. The rope gypsy can be used independently of wildcat. A handwheel wrench is furnished for added leverage. Power and gearbox can be mounted in three positions below deck. Shaft and fittings made of stainless steel. Also included are a chrome plated water tight foot switch, solenoid, three stainless steel mounting bolts. Deck thickness can be adjusted from 3" to 5" by adjusting the coupler. Deck pipe available that will handle chain and line with thimble.

Motor Voltages Available:

- ◆ ¾ hp. Ceramic field intermittent duty
12 Volt DC / Capacity 300 lbs.

Weight

- ◆ 80 lbs.

Chain Size

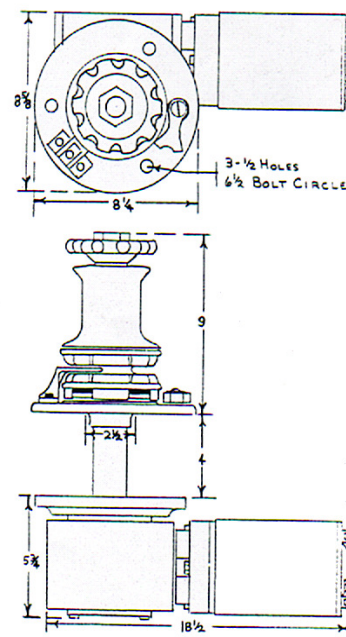
- ◆ 1/4," 5/16," 3/8," BBB, System 3, 4, 7, and System 8

Finish

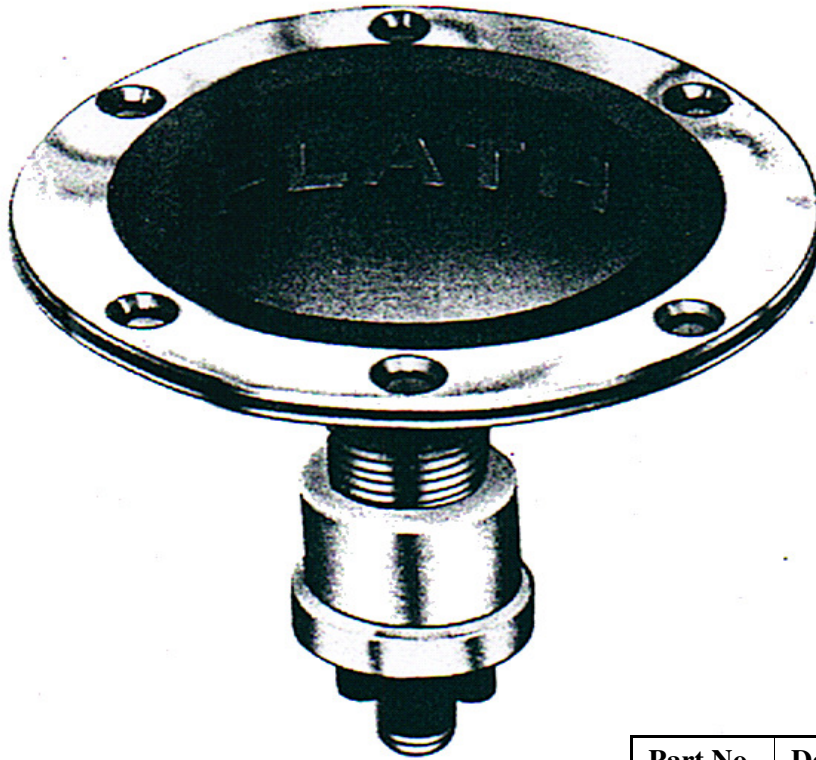
- ◆ Polished bronze deck plate, chain wildcat, rope gypsy and handwheel. (*Polished bronze can be furnished chrome plated.*)

Speed

- ◆ 40 ft. per minute



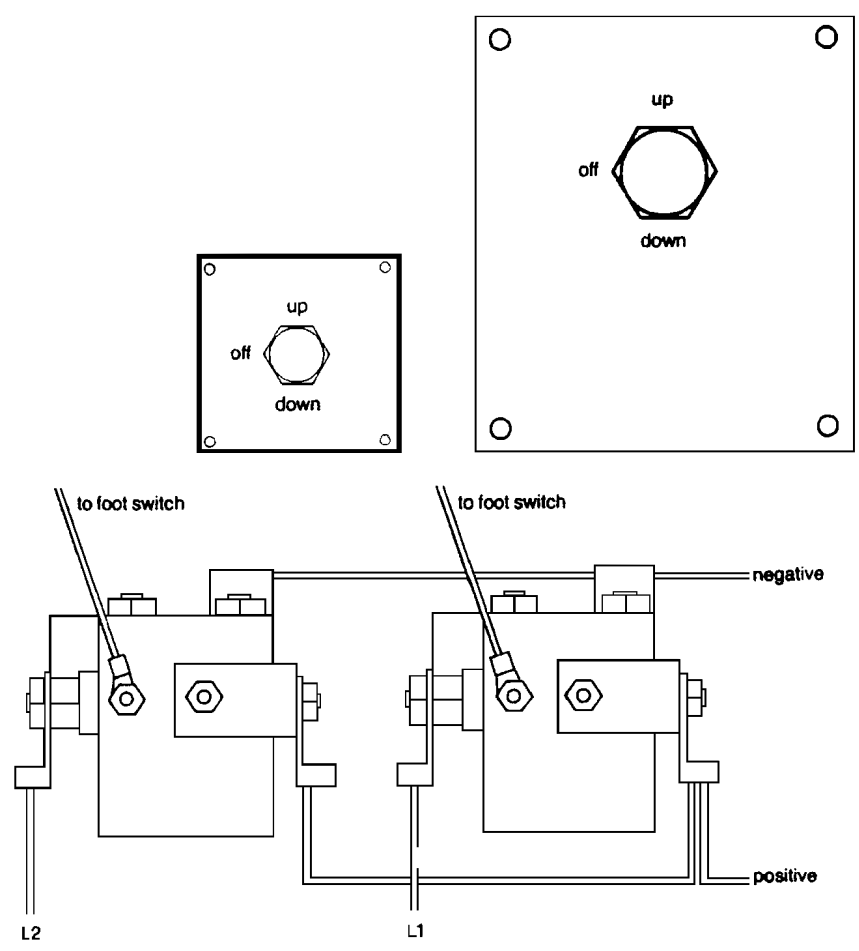
Foot Switch For Any No. 4-5-6-9-11 Electric Winch



Replacement Parts

Part No.	Description	Material	Quantity
1	Screw Flange	Brass-chrome	1
2	Cover	Rubber	1
3	Switch Hanger	Stainless Steel	1
4	Switch	Cole-Hersee M-491	1
5	Solenoid 24-32 Volts	Allen-Bradley	1

Power Up/Power Down Panel



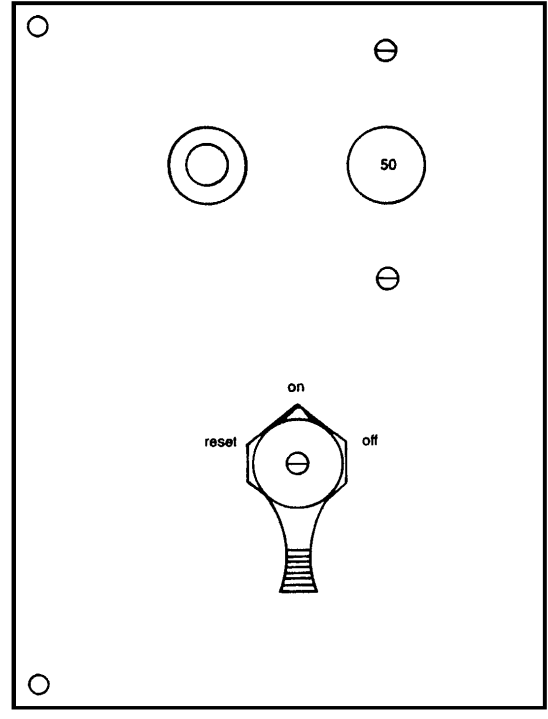
Power Up/Power Down Panel for 12 volt anchor windlass. Models 2, 3, 4, 5, 6, 9, 11, and 12.

Power Up/Power Down Panel for 115 volt. Models 2, 3, 4, 5, and 6.

The units that can be installed in the field are for windlass models 2, 3, 6, 9, 11, and 12.

Special windlass must be produced at the factory for models 4 and 5 and all 115 volt units of any model.

Anchor Windlass Protection Panel



12 volt, and 115 volt for all models.

Specifications

Suggested sizes of Anchor, Chain and Rope for vessels up to 35 tons

Weight of boat Short Tons	Min. anchor lbs. Kedge	Min. anchor lbs. Light Wt.	Nylon rope Diameter	Chain BBB	100 ft. of chain Weight lbs.	100 ft. of chain Cu. Ft. Volume
2	20	12	3/8"	3/16"	43	.24
5	30	15	1/2"	3/16"	43	.24
7 1/2	40	18	9/16"	1/4"	76	.42
10	50	20	9/16"	1/4"	76	.42
12 1/2	60	23	5/8"	5/16"	113	.65
15	70	25	5/8"	5/16"	113	.65
20	90	30	3/4"	3/8"	165	.94
25	110	35	3/4"	3/8"	165	.94
30	130	40	7/8"	7/16"	222	1.28
35	150	45	1"	1/2"	292	1.67

Wire Sizes and Recommended Fuses

AMERICAN WIRE STANDARDS

Distance from power source to windlass	Models No. 2G, 2GW, 3G, 3GW 4 (5-24-32-115 Volt) 6			Model No. (5-12 Volt) 9- 11-12G-12GW
_____	12 Volt DC	32 Volt DC	115 Volt AC	12 Volt DC
0 to 10 ft.	No. 6	No. 10	No. 12	No. 4
10 to 15 ft.	No. 6	No. 10	No. 12	No. 4
15 to 20 ft.	No. 4	No. 8	No. 12	No. 2
20 to 25 ft.	No. 2	No. 6	No. 12	No. 1
25 to 30 ft.	No. 2	No. 6	No. 12	No. 0
Current at rated load	35 amp	23 amp	20 amp	72 amp
Recommended Fuse	60 amp	40 amp	30 amp	100 amp